

## Special offer!

# LED Integrated Mariner

IP65 IK08  CE CB

## Product information

This fixture has an attractive, neutral aesthetics that makes it suitable for applications in both commercial, residential and industrial environments. It is an energy-efficient, low maintenance alternative to traditional fluorescent waterproof fixtures. The integrated mariner offers customers the best mix of value and performance. It has compact size with high lumen output and completely integrable lighting solution for applications with high requirements for luminous intensity and resistance.

## Features

- High performance with outstanding efficiency with 4 lumen packages – up to 126 lm/W
- 50 000 hours lifetime (L70)
- 2 colour temperatures: 4000 and 6500K with SDCM <6
- Wide beam angle of 125 degree
- Linear luminaire with high protection rating (IP65) and high impact resistance (IK08) make integrated LED mariner the ideal solution in challenging ambient conditions
- Suitable for operation in ambient temperature of -20°C to +40°C
- Integrated through-wiring 2x1.5mm<sup>2</sup>
- Quick connector solution on both ends of the fixture to allow single fixture or continuous fixture installations
- Static built-in driver
- PF >0,9
- THD < 20%
- Nominal Voltage: 220-240V
- Operating frequency: 50-60Hz
- High (850°C) Glow wire temperature
- Certificates: CE, CB, TÜV
- Insulation Class II
- Breather valve to maintain good waterproofness in case of over pressurization

## Benefits

- Energy savings of up to 62% (compared to luminaires that use fluorescent lamps)
- Uniform light
- Convenient , continuous connection for both sizes of 1200mm and 1500mm , simple and easy installation options
- High resistance against ambient air with humidity and high particle loads
- Simple refurbishment solution thanks to use of existing installation points with freely positionable mounting clips
- Fast and simple installation due to quick connector design

## Application areas

Industrial



Car park



Retail





## Structures and materials

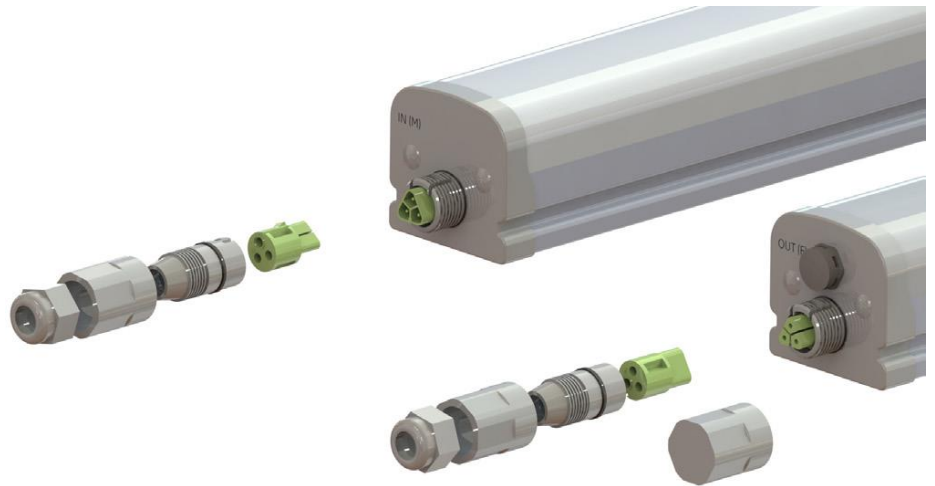
- Body: impact-resistant, polycarbonate cover
- UV stabilized, flame retardant polycarbonate with improved light transmission and good colorstability under heat exposure
- Colour: grey
- Sealing material between the shell and cover in PU (polyurethane), which offers the lamp excellent waterproof ability
- Waterproof plastic wiring connector with rubber gasket on one side of the fitting
- Convenient assembly bracket for ceiling mount, also opportunities for wall mounting with metal parts
- Small size profile and lightweight design
- All accessories for fixing are included in the package:



Wall mounting metal is 304 stainless steel  
Kits are packed to ensure end users can fix the fixture  
Fix to the ceiling: 2pcs wall mount clips plus 2 pcs of screws

## Electrical connection

- All accessories for electrical connection are included in the package
- 3 poles waterproof connector max. 2.5mm<sup>2</sup>
- Cable entry for cables D=6-9mm



| Code     | Product Description                  | Watt | Lumen | CCT (K) | CRI | Dimensions | Rated life (h) | Price nett p/p.         |
|----------|--------------------------------------|------|-------|---------|-----|------------|----------------|-------------------------|
| 93055991 | Integrated Mariner 2500Lm 840 - 1200 | 20   | 2500  | 4000    | 80  | 1200       | 50000<br>L70   | On request<br>available |
| 93055993 | Integrated Mariner 2500Lm 865 - 1200 | 20   | 2500  | 6500    | 80  | 1200       | 50000<br>L70   | On request<br>available |
| 93055995 | Integrated Mariner 3800Lm 840 - 1200 | 30   | 3800  | 4000    | 80  | 1200       | 50000<br>L70   | On request<br>available |
| 93055997 | Integrated Mariner 3800Lm 865 - 1200 | 30   | 3800  | 6500    | 80  | 1200       | 50000<br>L70   | On request<br>available |
| 93055999 | Integrated Mariner 3650Lm 840 - 1500 | 30   | 3650  | 4000    | 80  | 1500       | 50000<br>L70   | On request<br>available |
| 93056001 | Integrated Mariner 3650Lm 865 - 1500 | 30   | 3650  | 6500    | 80  | 1500       | 50000<br>L70   | On request<br>available |
| 93056003 | Integrated Mariner 6200Lm 840 - 1500 | 49   | 6200  | 4000    | 80  | 1500       | 50000<br>L70   | On request<br>available |
| 93056005 | Integrated Mariner 6200Lm 865 - 1500 | 49   | 6200  | 6500    | 80  | 1500       | 50000<br>L70   | On request<br>available |

Please note that the prices mentioned are in Euro's excl. VAT and WEEE!